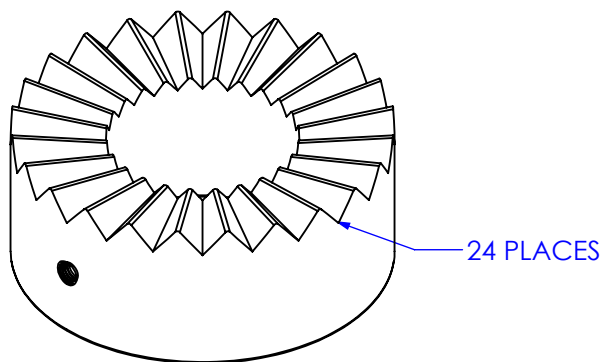
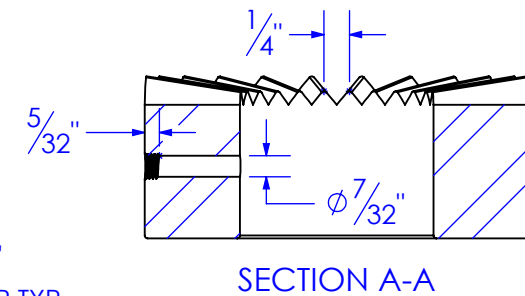
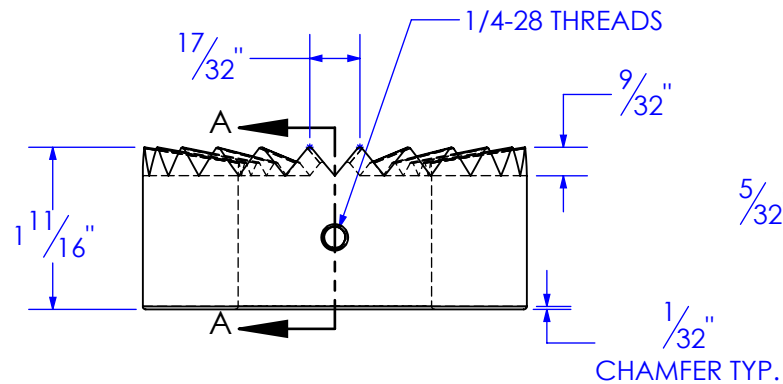
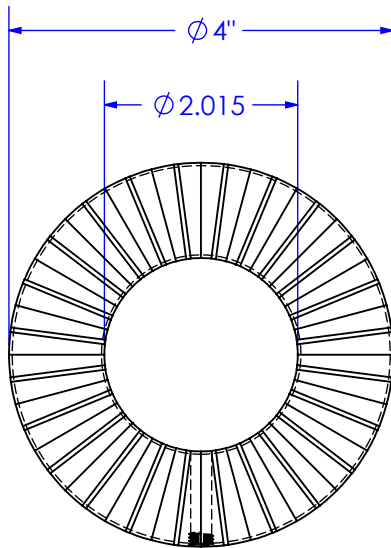


REVISIONS			
REV.	DESCRIPTION	DATE	APPROVED
A	INITIAL RELEASE	11/5/2018	
B	REVISE TEETH	12/10/2018	
C	ADD GREASE ZERK HOLE	12/9/2019	
D	INCREASE BORE SIZE	1/13/2020	



PROPRIETARY AND CONFIDENTIAL
THE INFORMATION CONTAINED IN THIS
DRAWING IS THE SOLE PROPERTY OF TRIPLE
C INC. ANY REPRODUCTION IN PART OR
AS A WHOLE WITHOUT THE WRITTEN
PERMISSION OF TRIPLE C, INC IS PROHIBITED.

UNLESS OTHERWISE SPECIFIED:
DIMENSIONS ARE IN INCHES
TOLERANCES:
FRACTIONAL $\pm 1/16$
ANGULAR: MACH ± 1 BEND \pm
TWO PLACE DECIMAL $\pm .010$
THREE PLACE DECIMAL $\pm .005$

MATERIAL ASTM A36 Steel
DO NOT SCALE DRAWING

	NAME	DATE	
D:	DRAWN	ETHAN	1/13/2020
	PART #	FP-HF8-SCR24	
	ASM #	Asm #	
	COMMENTS:		

SLIP CLUTCH
RACHET, FIGURE 8,
REEL LIFT

P.O. BOX 248, SABETHA, KS 66534
(785) 284-3674 FAX (785) 284-3931



SIZE	DWG. NO.	REV
A	12-2479	D
SCALE: 1:2	WEIGHT: 4.01	SHEET 1 OF 1